

**D MET** studio  
architecture & design

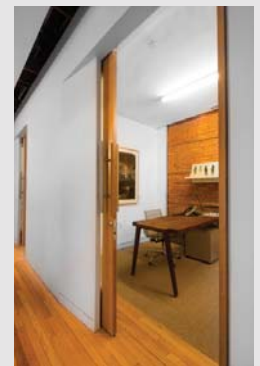
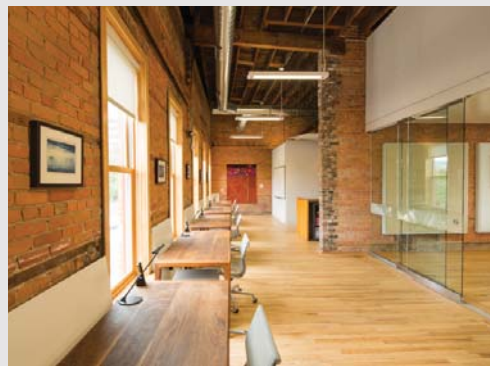
313.401.5181  
[www.dmetstudio.com](http://www.dmetstudio.com)

**ARCHITECTURE · INTERIORS · COMMERCIAL · RESIDENTIAL**

# THE KRESGE FOUNDATION DETROIT OFFICE

DETROIT, MICHIGAN

**D MET**  
architecture & design



## PROJECT SUMMARY

The Detroit office for the Kresge Foundation seeks to augment the beauty of a historic Midtown building, while embodying collegiality and sophistication. The solution deploys common elements such as gypsum board partitions, suspended ceilings, and a contemporary wainscot as a counterpoint to existing materials. Furniture and finishes were selected for their ephemeral or natural properties, and design elements such as “cracks, bevels, and frames” heighten an awareness of the interior’s contrapuntal nature.

Completed 2012.

*2014 Detroit Home Design Awards - Best Commercial Office Interior, 1st*

## PROJECT HIGHLIGHTS

RE-PURPOSING OF A VACANT SPACE  
RECLAIMED WOODS FROM DETROIT ARCHITECTURAL SALVAGE WAREHOUSE  
CUSTOM HARDWOOD FURNITURE  
ALL NATURAL MATERIALS AND FINISHES  
“FINE ARTS” GALLERY AESTHETIC

## CLIENT

THE KRESGE FOUNDATION

## CONTRACTOR

ROK CONSTRUCTION SERVICES

## SERVICES PROVIDED

ARCHITECTURE, INTERIORS, FURNITURE, + GRAPHICS/WAYFINDING

Midtown Detroit  
15 E Kirby Suite 103  
Detroit MI 48202

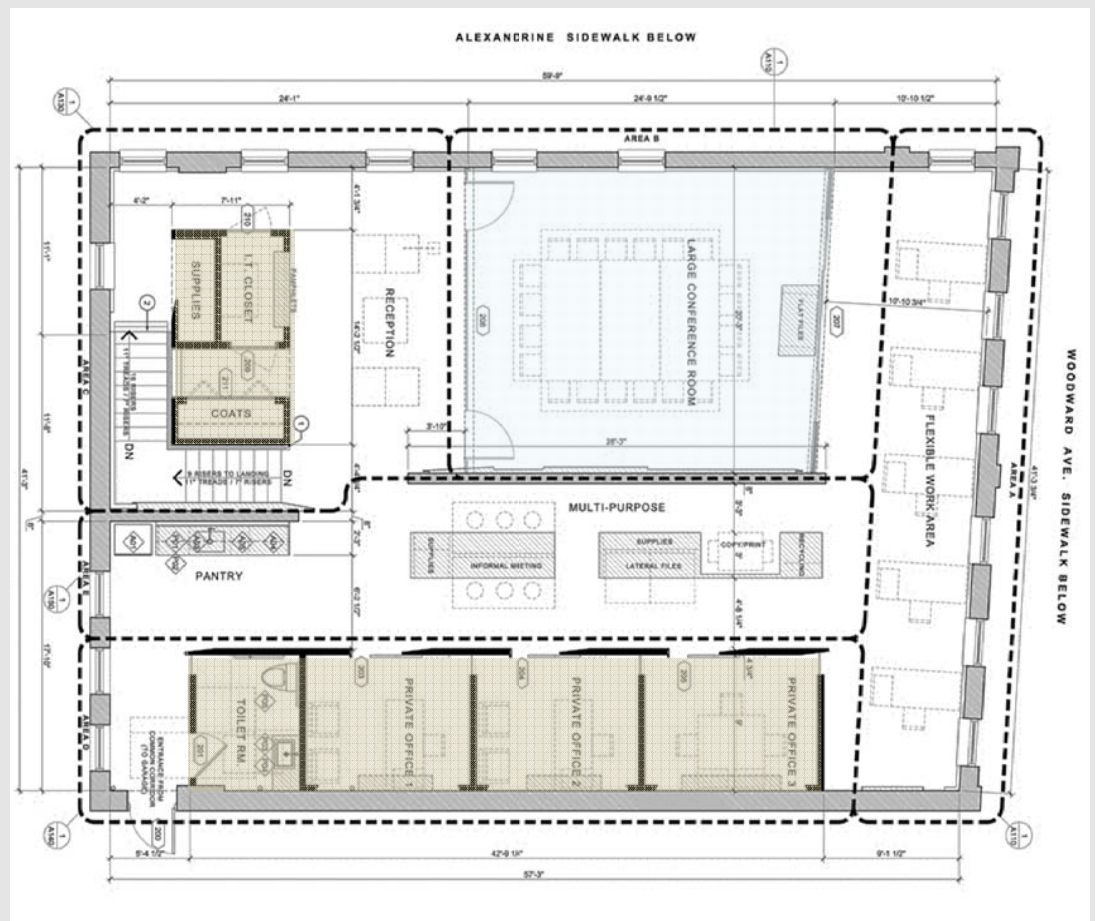
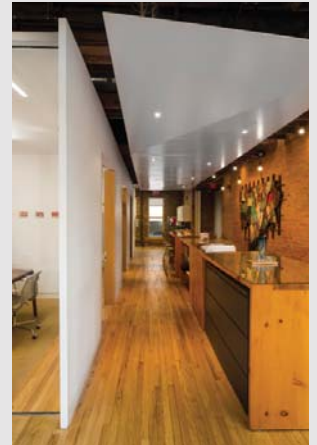
P 313 401 5181

[dmetstudio.com](http://dmetstudio.com)

# THE KRESGE FOUNDATION DETROIT OFFICE

DETROIT, MICHIGAN

**D MET**  
architecture & design



FLOOR PLAN  
2,475 SQUARE FEET

Midtown Detroit  
15 E Kirby Suite 103  
Detroit MI 48202

P 313 401 5181

dmestudio.com

# MCCI CORPORATE HEADQUARTERS MORT CRIM COMMUNICATIONS, INC.

DETROIT, MICHIGAN

**D MET**  
architecture & design



## PROJECT SUMMARY

The design for MCCI's new headquarters unites stylistic elements appropriate to a classic, midcentury media company with a forward thinking creative studio. Upon entering one is confronted with a row of quintessential managerial offices featuring anodized window frames, clear and translucent glazing, and white oak doors. To the south of this zone lies the 'creative studio' - a nearly all-white, other-worldly space full of 'big-table' desks, informal meetings areas, two 'phone booths', a conference room, and a visitor's/employee lounge. Neatly tucked within the building's poche lies three edit suites, a recording booth, and photo studio. The upscale furniture includes several classic pieces from Knoll, Herman Miller, and Coalesse, and is complemented by a handful of locally produced items including a walnut conference room table, Detroit-made wall paper, and digitally fabricated artwork. Helping to organize the open floor plan are four raised platforms. The raised platforms are covered in reused oak flooring from Reclaim Detroit, serve as a location for private activities, and are a means to insert a series of dramatic, 'domestic vignettes' into the creative environment. Further animating the space are a number of voyeuristic view corridors and framing elements that heighten the drama of creative work.

Completed 2014

Midtown Detroit  
15 E Kirby Suite 103  
Detroit MI 48202

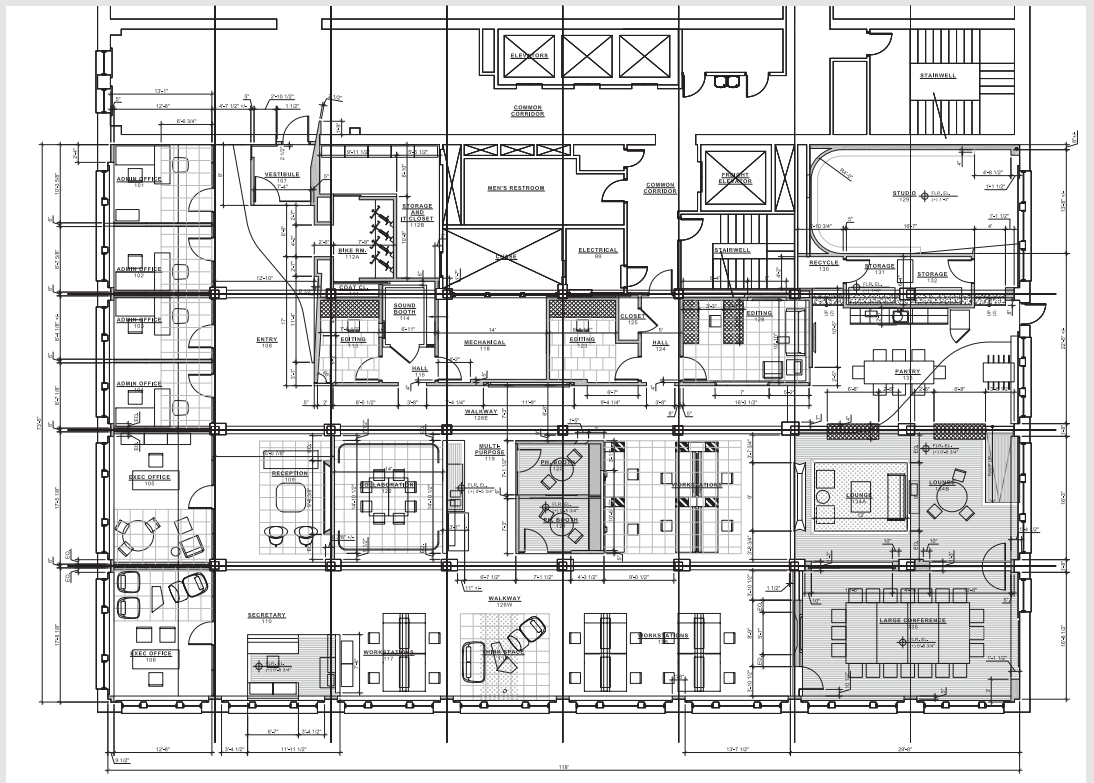
P 313 401 5181

[dmetstudio.com](http://dmetstudio.com)

# MORT CRIM COMMUNICATIONS, INC DETROIT OFFICE

DETROIT, MICHIGAN

**D MET**  
architecture & design



**FLOOR PLAN**  
7,500 SQUARE FEET

Midtown Detroit  
15 E Kirby Suite 103  
Detroit MI 48202

P 313 401 5181

[dmetstudio.com](http://dmetstudio.com)

**CLIENT**  
MORT CRIM COMMUNICATIONS, INC.

**CONTRACTOR**  
THE FERLITO GROUP

**SERVICES PROVIDED**  
ARCHITECTURE, INTERIORS, FURNITURE, + GRAPHICS/WAYFINDING

# MIDTOWN DETROIT, INC. MIDTOWN Co-Lab

DETROIT, MICHIGAN

**D MET**  
architecture & design



## PROJECT SUMMARY

The office for Midtown Detroit Inc. is conceived as a collaborate environment, in which community leaders, funders, and entrepreneurs come to build a better Detroit. Contemporary workstations are arranged in parallel rows at the center of an open floor plan. Intimate spaces for meetings and conversation are interspersed around the perimeter. Glass partitions and sliding doors, such as the conference room's corner slider, provide needed privacy while maintaining spatial continuity and visual transparency.

Completed 2011.

*2014 Detroit Home Design Awards - Best Commercial Office Interior, 2nd*

## PROJECT HIGHLIGHTS

- OFFICE FOR NON-PROFIT
- COMMUNITY ENHANCEMENT ORGANIZATION
- OPEN-OFFICE FLOOR PLAN
- INTEGRATED BRANDING SCHEME
- "STUDIO" STYLE FURNITURE AND AESTHETIC

## CLIENT

MIDTOWN DETROIT, INC.

## SERVICES PROVIDED

ARCHITECTURE, INTERIORS, FURNITURE, + GRAPHICS/WAYFINDING

Midtown Detroit  
15 E Kirby Suite 103  
Detroit MI 48202

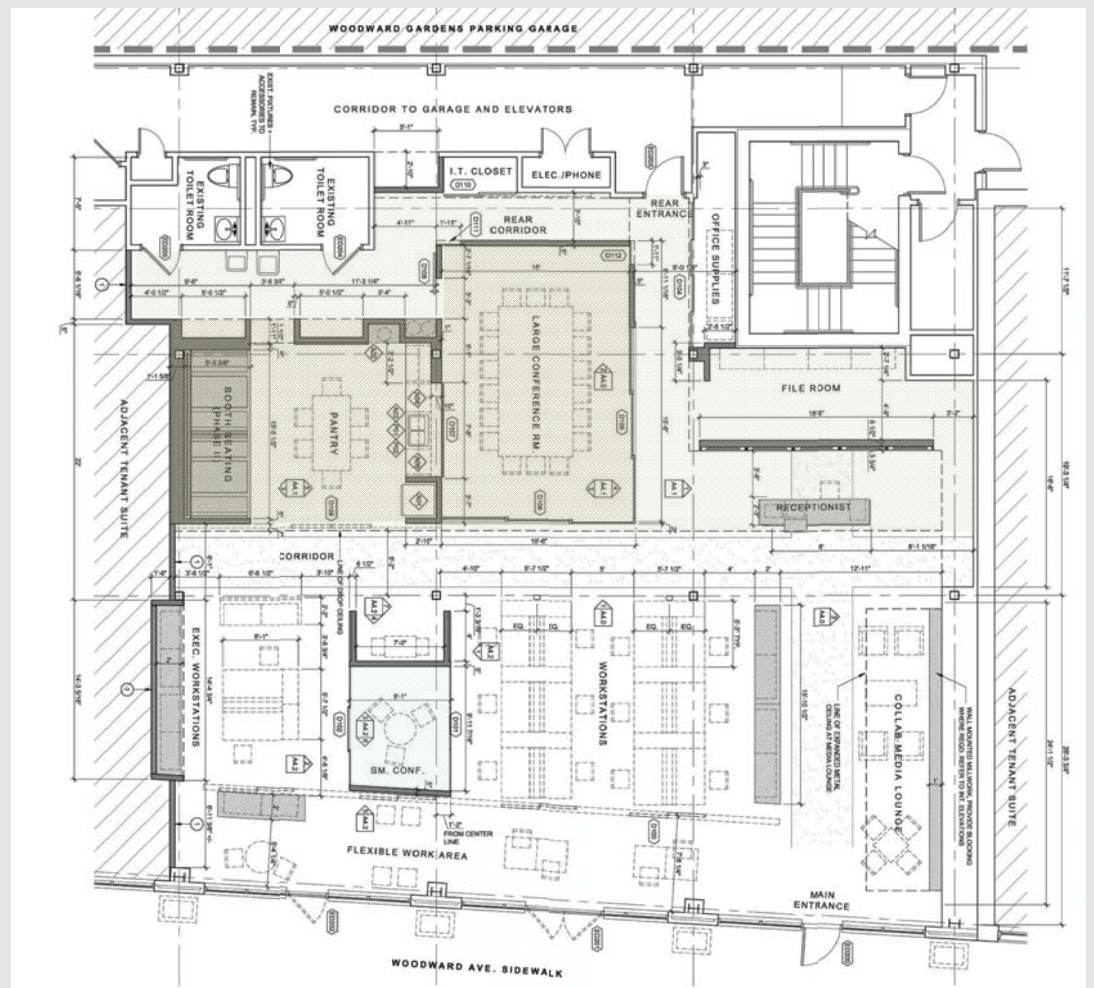
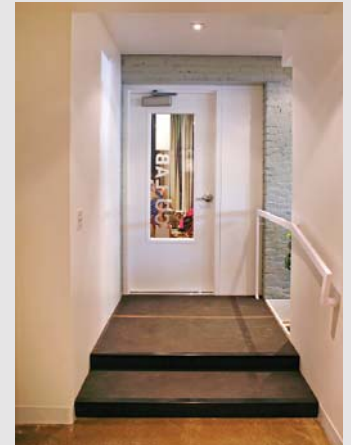
P 313 401 5181

[dmetstudio.com](http://dmetstudio.com)

# MIDTOWN DETROIT, INC. MIDTOWN Co-Lab

DETROIT, MICHIGAN

**D MET**  
architecture & design



Midtown Detroit  
15 E Kirby Suite 103  
Detroit MI 48202

P 313 401 5181

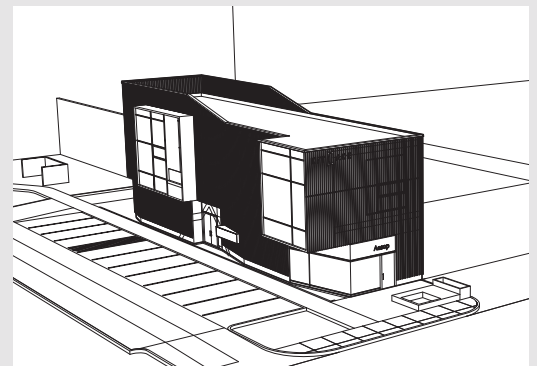
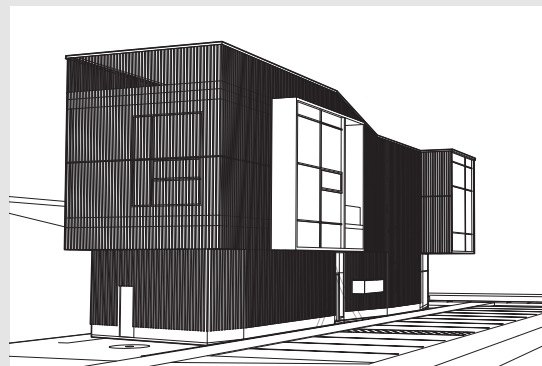
dmetstudio.com

FLOOR PLAN  
3,440 SQUARE FEET

# CANFIELD RETAIL BUILDING MIDTOWN DETROIT RETAIL

DETROIT, MICHIGAN

**D MET**  
architecture & design



## PROJECT SUMMARY

The proposed 5,000 GSF structure is located on a small parcel immediately East of and adjacent to the Willys building. In response to the many vantages from which persons may approach, our design provides two distinct faces - one for each tenant. A ground floor retail space is furnished with a 'classic' corner storefront window and opens directly onto W. Canfield. It features 15' ceilings and has direct access to common facilities located on the ground floor. A second floor suite features two large, highly visible retail windows on the East facade and is accessed via the newly completed Willis-Canfield pedestrian alley. The building behaves like a person standing squarely on W. Canfield, shoulder-to-shoulder with her upscale neighbors, yet with head turned towards the East, addressing the busy intersection of W. Canfield and Cass.

Pending Funding 2015

## PROJECT HIGHLIGHTS

- NEW PROPOSED RETAIL ARCHITECTURE
- OPEN JOINT, CEDAR SLAT RAINSCREEN
- ENERGY EFFICIENT & ECONOMICAL PRE-FAB
- PANELIZED CONSTRUCTION

## CLIENT

MIDTOWN DETROIT, INC

## SERVICES PROVIDED

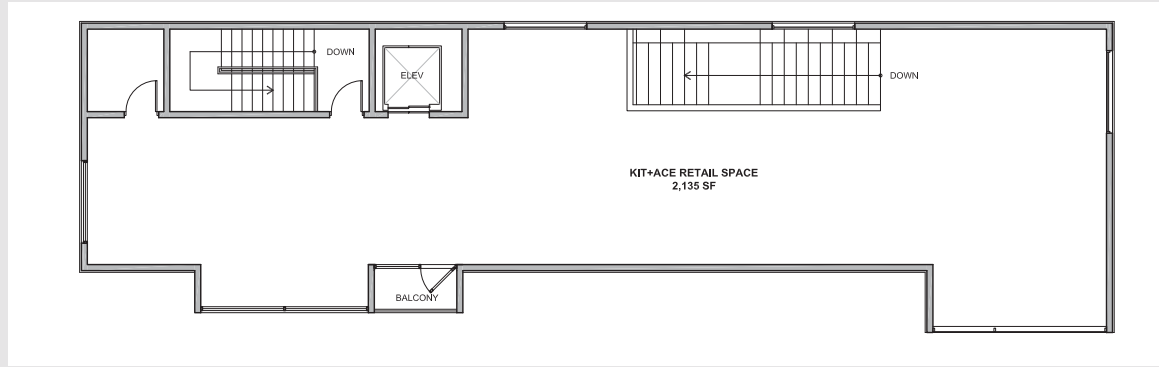
ARCHITECTURE + URBAN DESIGN

Midtown Detroit  
15 E Kirby Suite 103  
Detroit MI 48202

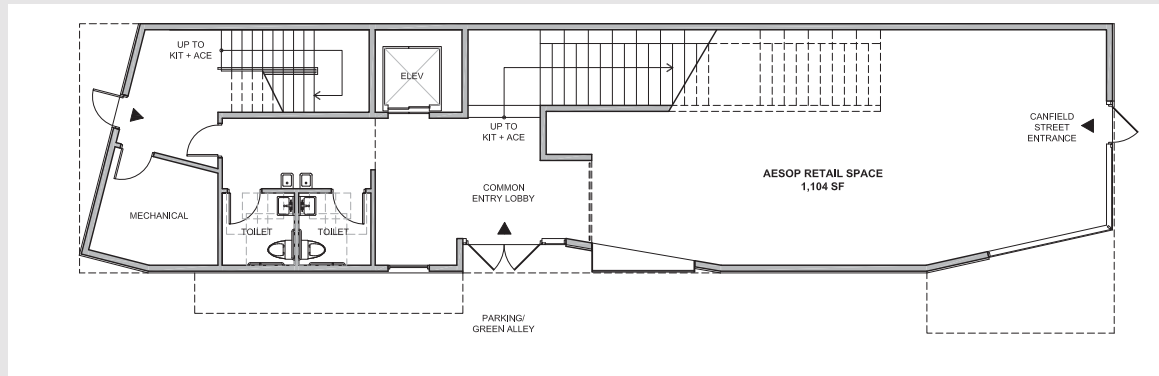
P 313 401 5181

dmestudio.com

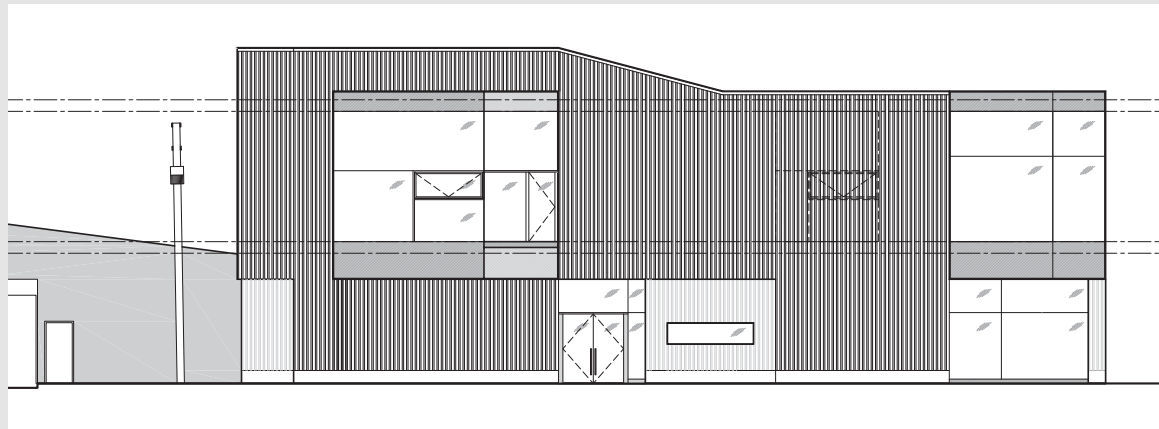




SECOND FLOOR PLAN  
2,135 SQUARE FEET



GROUND FLOOR PLAN  
2,265 SQUARE FEET



EAST EXTERIOR ELEVATION

# CANINE TO FIVE DOGGY DAY CARE FACADE RENOVATION

DETROIT, MICHIGAN

**D MET**  
architecture & design



BEFORE



## PROJECT SUMMARY

The façade design for Canine to Five stems from an analysis of financial, technical and programmatic constraints. In order to maximize the impact of a matching façade-improvement grant from Midtown Detroit Inc., the design employs a relatively low-cost and environmentally friendly fiber-cement rainscreen which stops water infiltration, updates appearances and serves as a vehicle for advertising. Integrated lighting provides illumination in the absence of street lights. A fresh color scheme and new signage create a clean and bright statement of vibrancy, helping to transform a blighted area.

Completed 2011.

*2014 Detroit Home Design Awards - Best Commercial Architecture, 2nd*

## PROJECT HIGHLIGHTS

REHABILITATION AND REBRANDING OF AN EXISTING FACADE  
ECONOMIC, HIGH-DENSITY FIBER-CEMENT RAINSCREEN  
INTEGRATED LIGHTING  
NEW, VISIBLE SIGNAGE  
NEW WINDOWS AND DOORS

## CLIENTS

CANINE TO FIVE, DETROIT  
MIDTOWN DETROIT INC.

## CLIENTS

FIRST CHOICE BUILDING

## SERVICES PROVIDED

ARCHITECTURE + IDENTITY DESIGN

Midtown Detroit  
15 E Kirby Suite 103  
Detroit MI 48202

P 313 401 5181

[dmetstudio.com](http://dmetstudio.com)

# 4130 CASS AVE FACADE RENOVATION

DETROIT, MICHIGAN

**D MET**  
architecture & design



BEFORE



## PROJECT SUMMARY

The design for 4130 Cass is a creative solution to façade renovation within a historic district. A deteriorated existing structure and limited budget necessitated an alternative to reconstruction, while owner, artist Adnan Chararra, desired a contemporary and engaging design. The strategy employs a fiber-cement rainscreen to cost-effectively protect the existing building, while simultaneously allowing for a sculptural form. The composition and colors give the new 'skin' a sense of movement and lightness. Contextually, the façade relates to the depth (bay windows and cornices), heights, and rich texture of the neighboring historic structures. The original arrangement of two storefront windows and a central recessed entrance was also reinstated. The result is a compelling and energetic contribution to the street in an emerging creative district.

Completed 2013

## PROJECT POINTS

- STABILIZATION OF AN EXISTING FAÇADE
- HI-DENSITY FIBER-CEMENT RAINSCREEN
- NEW STOREFRONT WINDOWS AND DOORS
- INTEGRATED LIGHTING
- NEW STAINED CONCRETE ALLEY AND SIDEWALK
- HISTORIC DISTRICT COMMISSION APPROVED

## CLIENTS

ADNAN CHARARRA STUDIO W/ SUPPORT FROM MIDTOWN DETROIT INC.

## CLIENTS

THE MONAHAN COMPANY

## SERVICES PROVIDED

ARCHITECTURE + IDENTITY DESIGN

Midtown Detroit  
15 E Kirby Suite 103  
Detroit MI 48202

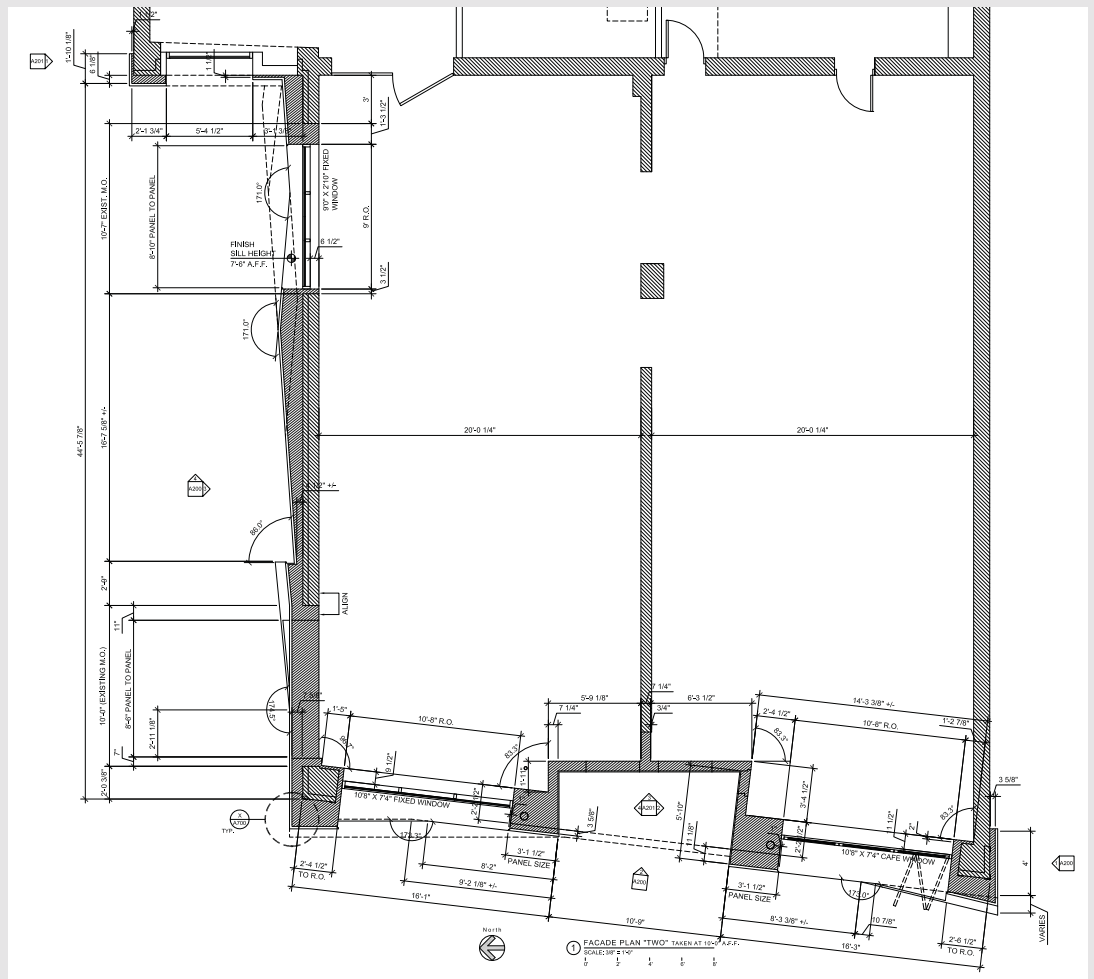
P 313 401 5181

[dmetstudio.com](http://dmetstudio.com)

# 4130 CASS AVE FACADE RENOVATION

DETROIT, MICHIGAN

**D MET**  
architecture & design



**FLOOR PLAN**  
2,400 SQUARE FEET

Midtown Detroit  
15 E Kirby Suite 103  
Detroit MI 48202

P 313 401 5181

[dmetstudio.com](http://dmetstudio.com)

# LAKE ANGELUS VACATION HOUSE HOUSE RENOVATION

LAKE ANGELUS, MICHIGAN

**D MET**  
architecture & design



## PROJECT SUMMARY

The Lake Angelus Vacation House was conceived and built as a weekend retreat for a Royal Oak family. The project includes a complete transformation of an existing mid-century ranch into a multi-generational family getaway, the design and construction of a new barn/garage, and the redesign of the property's landscape. The design for the house on Lake Angelus combines the formal language of traditional seaside architecture with a contemporary and loft-like aesthetic. A new roofline with a steep ridge and broad, low-slope eaves gives the house a recognizable and relaxed, formal identity on the exterior, while providing vaulted ceilings inside. Large windows, a new front porch, side-entry porch, lakeside deck and screened-in rear porch contribute to a seamless indoor-outdoor connectivity appropriate to a contemporary lakeside home. Inside, the formality of the old room-based plan gives way to a series of large overlapping living spaces. The former attached garage is now a loft-like family room; and kitchen, dining room, and living room merge into a single, family-orientated space. The oblique angles at which elements and spaces collide render the traditional forms with an unexpected contemporary feel.

Completed February 2013.

Midtown Detroit  
15 E Kirby Suite 103  
Detroit MI 48202

P 313 401 5181

[dmetstudio.com](http://dmetstudio.com)

# LAKE ANGELUS VACATION HOUSE HOUSE RENOVATION

LAKE ANGELUS, MICHIGAN

**D MET**  
architecture & design



*Winner: 2015 Detroit Home Design Awards - Best Large Remodel, 2nd place*

Midtown Detroit  
15 E Kirby Suite 103  
Detroit MI 48202

P 313 401 5181

[dmetstudio.com](http://dmetstudio.com)

CLIENT  
N/A

CONTRACTOR  
FIRST CHOICE BUILDING AND CONSTRUCTION

SERVICES PROVIDED  
ARCHITECTURE + INTERIORS

# MIKE TEAVEE "AM I COMING IN CLEAR?" DLECTRICITY DETROIT'S NIGHTTIME EXHIBITION OF ART + LIGHT

DETROIT, MICHIGAN

**D MET**  
architecture & design



## PROJECT SUMMARY

Installed at Dlectricity, Detroit 2014. Inspired by the distinctive flickering glow of television light as seen from outside a neighbors' window or cast upon the face of an entranced viewer, Mike Teavee re-creates the magnetic attraction of television in a wide-open urban lot at night. Viewed from a distance, the large, luminous, blueish-white "screen" floats in the darkness, drawing spectators like a moth to a flame. Up close, visitors are transported into an otherworldly, all-white TV stage-set which playfully distorts perspective and scale. Actors / visitors inside the great television encounter props, hidden entrances, and inclined surfaces. Audiences outside can complete the charades by broadcasting to the world the happenings at Mike Teavee via Facebook, Instagram or Twitter, making real stars out of pretend actors in a pretend TV. Mike Teavee allows children and kids-at-heart to fulfill the ubiquitous cultural fantasy of being 'sent by television'. "Hey mom, I said, am I coming in clear?"

Dlectricity Festival, September 26th + 27th, 2014

Midtown Detroit  
15 E Kirby Suite 103  
Detroit MI 48202

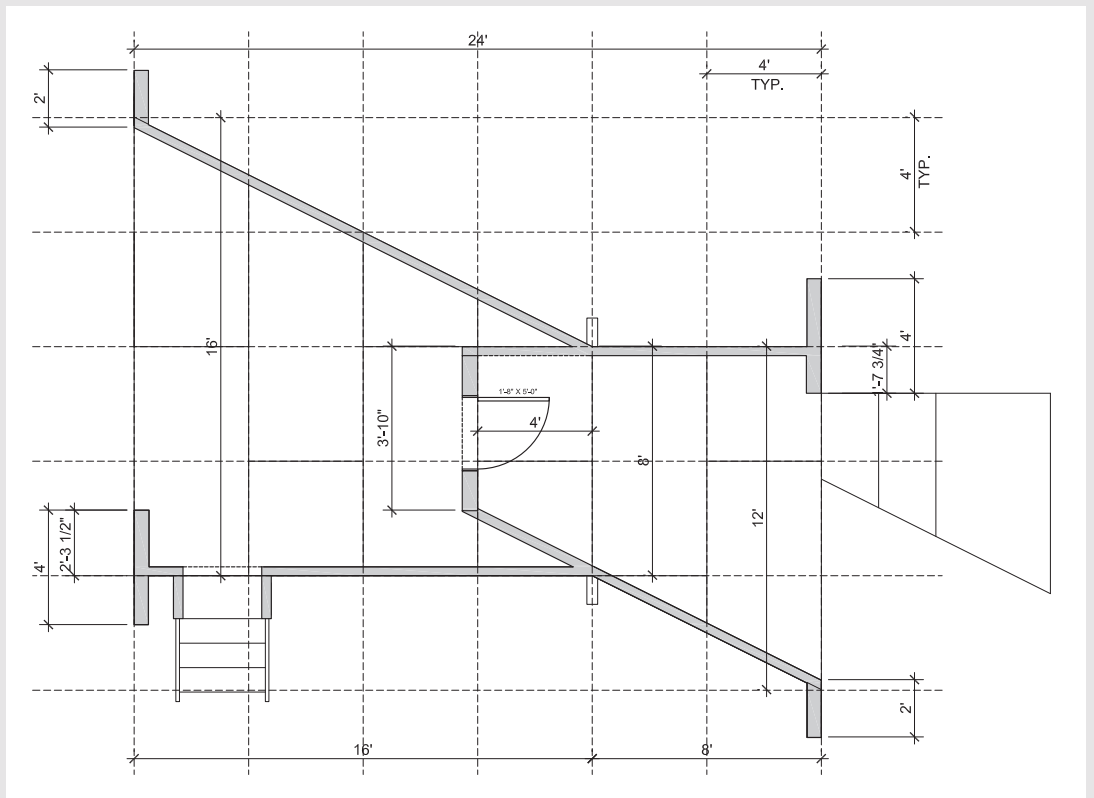
P 313 401 5181

[dmetstudio.com](http://dmetstudio.com)

**MIKE TEEVEE** "AM I COMING IN CLEAR?"  
**DLECTRICITY** DETROIT'S NIGHTTIME EXHIBITION OF ART + LIGHT

DETROIT, MICHIGAN

**D MET**  
 architecture & design



**FLOOR PLAN**  
 270 SQUARE FEET

Midtown Detroit  
 15 E Kirby Suite 103  
 Detroit MI 48202

P 313 401 5181

[dmetstudio.com](http://dmetstudio.com)



# FRONTIER TOWN A TENT CAMP FOR CHILDREN IN THE URBAN WILD DLECTRICITY DETROIT'S NIGHTTIME EXHIBITION OF ART + LIGHT

DETROIT, MICHIGAN

**D MET**  
architecture & design



## PROJECT SUMMARY

Installed at Dlectricity, Detroit 2012.

A circle of glowing tents set in the wide-open urban prairie, invite children (and kids at heart) to explore the magical shelter of light and fabric. At the scale of the site: large prismatic geometries serve as a beacon for gathering and wonder, while hand-made, battery-powered luminaires add whimsical interpretations of overhead 'telegraph lines' and 'firefly traps.' At the scale of shelter: "candel" light inside the tents creates individual, magical spaces for gathering while flashlights and frontier themed shadow puppets encourage a playful and participatory personal experience. A sound track of owl hoots, fire crackling, and folk music, completes the mirage of inhabiting the Frontier.

## PROJECT HIGHLIGHTS

PUBLIC ART INSTALLATION  
USER INTERACTIVE  
ALL HANDMADE LUMINAIRES  
BATTERY-POWERED LED TECHNOLOGY  
DESIGNED, BUILT AND INSTALLED BY D MET  
IN COLLABORATION WITH FABRIC ARTIST  
SARAH LAPINSKI

PRODUCED BY  
MIDTOWN DETROIT INC.  
DETROIT GALLERY WEEK

Midtown Detroit  
15 E Kirby Suite 103  
Detroit MI 48202

P 313 401 5181

dmetstudio.com

Dlectricity Festival, October 5th + 6th, 2012

# THE GREAT LAKES COFFEE ROASTING CO. INSTITUTE FOR ADVANCED DRINKING

DETROIT, MICHIGAN

**D MET**  
architecture & design



## PROJECT SUMMARY

The “Institute” is a reinterpretation of a classic European cafe. It is a gathering place for all times of day. It is a community space where friends and acquaintances talk over coffee, artisan foods, and craft drinks.

The solution seamlessly combines the aesthetics and functions of a bar, coffeehouse and community room. A variety of seating arrangements accommodate different ways of conversing, while locally sourced reclaimed woods and naturally finished materials reflect the hallmark characteristics of Great Lakes coffee.

Completed 2012.

*2014 Detroit Home Design Awards - Best Retail Interior, 3rd*

## PROJECT HIGHLIGHTS

COFFEE HOUSE AND WINE BAR  
RE-PURPOSING AND RE-BRANDING OF A  
VACANT SPACE AND EXISTING FACADE  
RECLAIMED WOODS FROM  
HAMTRAMCK, MI  
CUSTOM FURNITURE  
DETROIT-BASED MATERIALS AND  
FABRICATORS USED THROUGHOUT  
“EUROPEAN” STYLE OUTDOOR PATIO

## CLIENT

THE GREAT LAKES COFFEE ROASTING CO.

## CONTRACTOR

CUNNINGHAM-LIMP

## SERVICES PROVIDED

ARCHITECTURE, INTERIORS, FURNITURE,  
GRAPHICS/WAYFINDING, + SIGNAGE

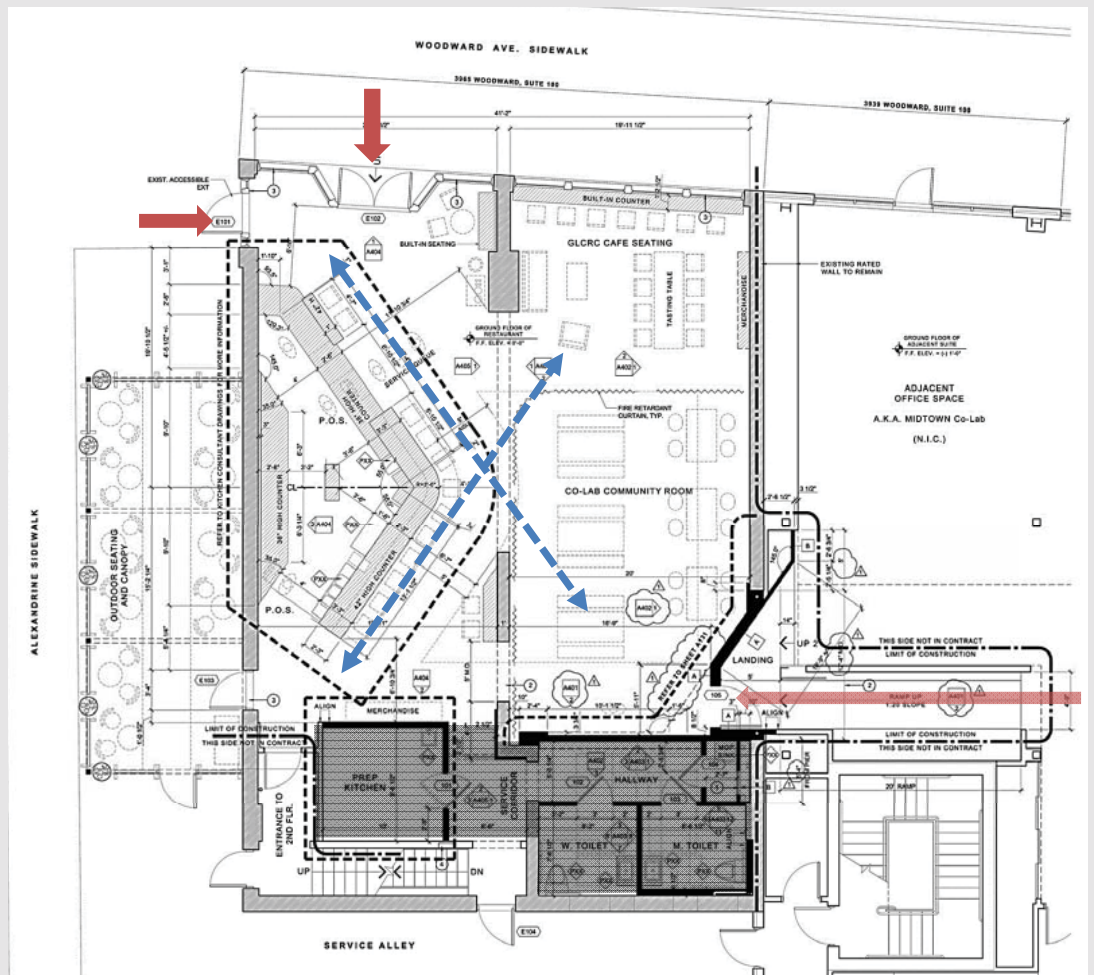
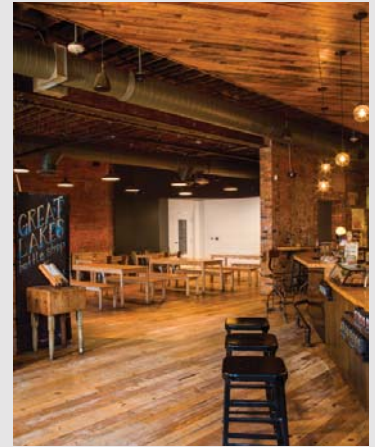
Midtown Detroit  
15 E Kirby Suite 103  
Detroit MI 48202

P 313 401 5181

[dmetstudio.com](http://dmetstudio.com)

THE GREAT LAKES COFFEE ROASTING CO.  
 INSTITUTE FOR ADVANCED DRINKING  
 DETROIT, MICHIGAN

**D MET**  
 architecture & design



FLOOR PLAN  
 2,400 SQUARE FEET

Midtown Detroit  
 15 E Kirby Suite 103  
 Detroit MI 48202

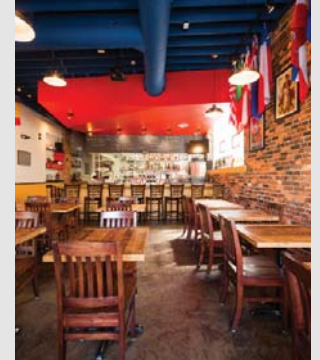
P 313 401 5181

dmetstudio.com

# LA FERIA SPANISH TAPAS RESTAURANT

DETROIT, MICHIGAN

**D MET**  
architecture & design



## PROJECT SUMMARY

Located inside 4130 Cass, La Feria is conceived as a neighborhood restaurant serving authentic Spanish Tapas in an emerging creative district. The intimate dining room and bar relate to both street and kitchen through oversized openings. An accordion-style window with bench-seat opens completely, seamlessly connecting the restaurant with street-life, while a visible kitchen invites patrons to converse with the head chef. Over head, a faceted ceiling defines the bar area and evokes the image of festive tents found at the Spanish festival for which the restaurant is named. Throughout the space, a playful and authentic color palette further hint at the Owner's Spanish heritage, while traces of the buildings masonry walls and wood ceiling remind one of the restaurant's location inside an historic Detroit garage building.

Completed 2014

CLIENT  
LA FERIA, DETROIT

SERVICES PROVIDED  
ARCHITECTURE + INTERIORS

Midtown Detroit  
15 E Kirby Suite 103  
Detroit MI 48202

P 313 401 5181

[dmetstudio.com](http://dmetstudio.com)

# GREAT LAKES COFFEE ROASTING CO. LAKE ORION COFFEE BAR

LAKE ORION, MICHIGAN

**D MET**  
architecture & design



## PROJECT SUMMARY

The Lake Orion Coffee Bar embraces its roadside nature by tapping into 50's diner and garage aesthetics. Clean lines and an adherence to the grid create a discrete identity for the coffee shop space which inhabits the more-transitional, Kensington Church. A horseshoe bar with flanking espresso machines and root beer on-tap serves to merge soda-fountain and coffee-shop typologies. Naturally-finished concrete, metal and re-claimed wood add texture to the industrial shell while a monochrome color scheme and retro light fixtures create a nostalgic filter. Drive-thru patrons will enjoy a more design-conscious and tactile experience suitable for the craft-coffee brand, with a custom-designed menu board, graphics, planters and lighting.

## PROJECT HIGHLIGHTS

INTERIOR FIT-OUT AND FURNISHINGS  
EXTERIOR IMPROVEMENTS AND SIGNAGE  
CONSULTING ON BRANDING, MENU DESIGN  
DRIVE-THRU & OUTDOOR SEATING

## CLIENT

THE GREAT LAKES COFFEE ROASTING CO.

## SERVICES PROVIDED

ARCHITECTURE, INTERIORS, FURNITURE,  
GRAPHICS/WAYFINDING, + SIGNAGE  
DESIGN

Midtown Detroit  
15 E Kirby Suite 103  
Detroit MI 48202

P 313 401 5181

[dmetstudio.com](http://dmetstudio.com)

Completed 2012

# 524-526 E. KIRBY STREET APARTMENTS

DETROIT, MICHIGAN

**D MET**  
architecture & design



## PROJECT SUMMARY

D MET's design for the rehabilitation of a vacant, two-story, four-family historic residential structure on E. Kirby Street reinterprets the neighborhood vernacular and re-positions the building for contemporary lifestyles. The unit floor plans feature an open kitchen, two bedrooms, a walk-through mud room, shared bathroom, and in-unit laundry. New stairs in two of the four units will take advantage of bonus rooms carved out of the basement and attic. Capping the reconstructed building is a new gable roof. This roof-line yields a larger building volume, yet through careful proportioning and detailing is historically compatible with the traditional hip roofs dominating the block.

## PROJECT HIGHLIGHTS

100% RENOVATION OF A FIRE DAMAGED  
MULTI-FAMILY BUILDING  
REINTERPRETATION OF HISTORICAL/  
LANDMARK DESIGN CRITERIA

## CLIENT

E. KIRBY DEVELOPMENT, LLC

## SERVICES PROVIDED

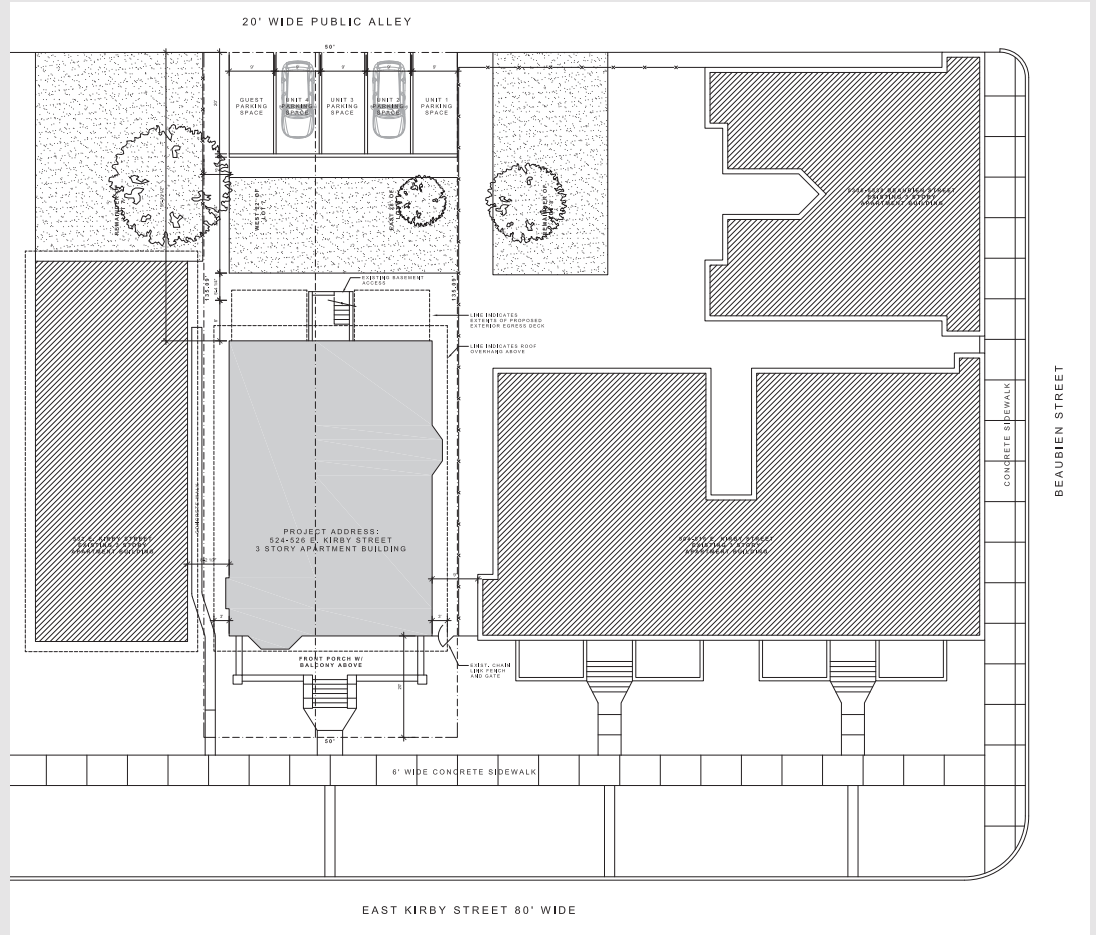
ARCHITECTURE, INTERIOR DESIGN, +  
HISTORIC PRESERVATION

Midtown Detroit  
15 E Kirby Suite 103  
Detroit MI 48202

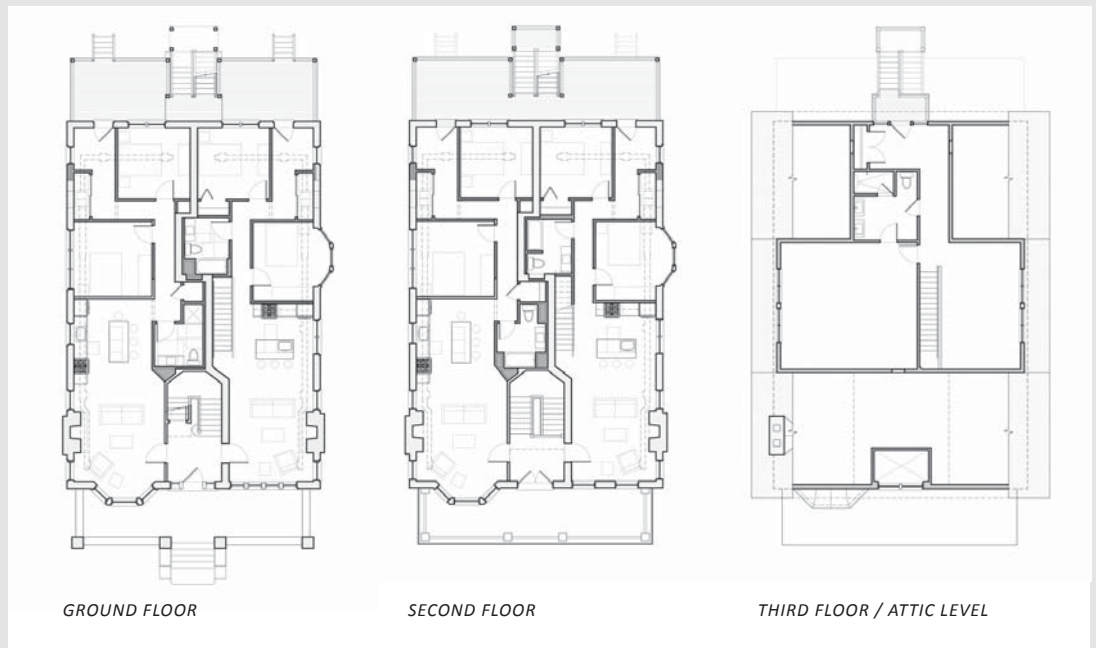
P 313 401 5181

[dmetstudio.com](http://dmetstudio.com)

Ongoing 2015



ARCHITECTURAL SITE PLAN



UNIT PLANS  
5,810 SQ. FT.

Midtown Detroit  
15 E Kirby Suite 103  
Detroit MI 48202

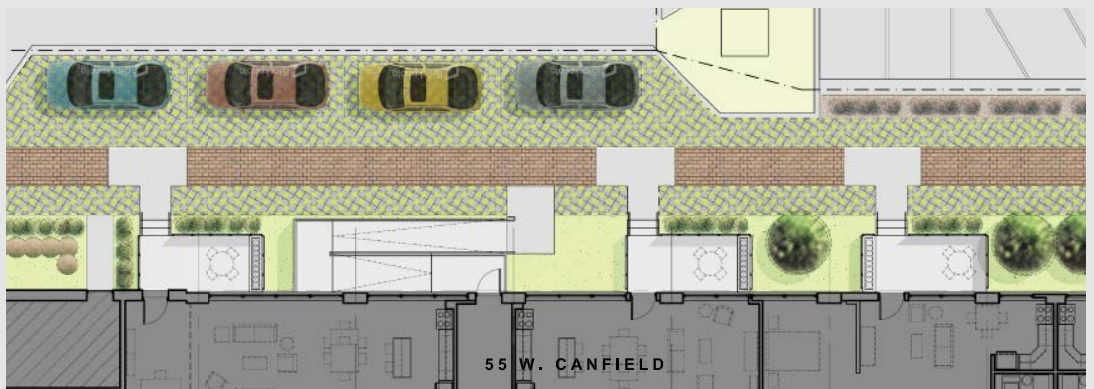
P 313 401 5181

dmestudio.com

# 55 WEST CANFIELD LOFTS GARDEN LOFTS

DETROIT, MICHIGAN

**D MET**  
architecture & design



## PROJECT SUMMARY

D MET's plans for the garden lofts at 55 W. Canfield were successful in turning under utilized retail space into prized residential condos. The space which the condos occupy sat empty for years after a failed attempt to lure Avalon Bakery to the building. D MET's vision for garden level units with direct access via private 'stoops' to a new pedestrian, 'green' alley helped restore interest in the property and garner community development support. Prepared for Roberston Brothers, the then property manager of 55 W. Canfield, D MET's design was used to solicit the support of MDI and Invest Detroit. Subsequently built by the new property managers, the units quickly sold out, and the pedestrian alley is on schedule to be completed in 2015.

Completed 2014. Alley improvements pending funding.

## PROJECT HIGHLIGHTS

ADAPTIVE REUSE  
MULTI-FAMILY UNITS/LOFTS  
CONTEMPORARY URBAN SPACE/  
PUBLIC SPACE DESIGN

## CLIENT

ROBERTSON BROTHERS HOMES

## SERVICES

ARCHITECTURE + LANDSCAPE DESIGN

Midtown Detroit  
15 E Kirby Suite 103  
Detroit MI 48202

P 313 401 5181

dmetstudio.com



# EMCURA IMMEDIATE CARE BLOOMFIELD OFFICE AND CLINIC

BLOOMFIELD, MICHIGAN

**D MET**  
architecture & design



## PROJECT SUMMARY

EMCURA's Bloomfield office is a refreshingly unique clinic environment aiming to elevate the patient experience via a calm, nurturing, and distinctly-modern atmosphere. This objective is carried out through the use of natural materials and refreshing colors, ethical design choices, and classic modern furniture from Michigan companies. Default construction techniques are updated for an overall elegant effect. An existing acoustical tile ceiling tile was removed to expose an airy, metal deck and trusses above and new gypsum walls and ceilings are tapered and folded like a crisply-tailored nurse's uniform. Materials such as concrete floors, stainless counters, and gloss-white paint create a feeling of cleanliness that is balanced by the warmth of white-oak doors, flooring and trim details.

## PROJECT HIGHLIGHTS

INTERIOR FIT-OUT AND FURNISHINGS  
GRAPHICS, WAYFINDING AND SIGNAGE  
CUSTOM DESIGNED RECEPTION DESK AND  
SHELVING  
GREEN MATERIALS AND FINISHES  
LOCALLY SOURCED FURNITURE

## CLIENT

EMCURA MEDICAL GROUP

## SERVICES PROVIDED

ARCHITECTURE, INTERIORS, FURNITURE, +  
GRAPHICS/WAYFINDING

Midtown Detroit  
15 E Kirby Suite 103  
Detroit MI 48202

P 313 401 5181

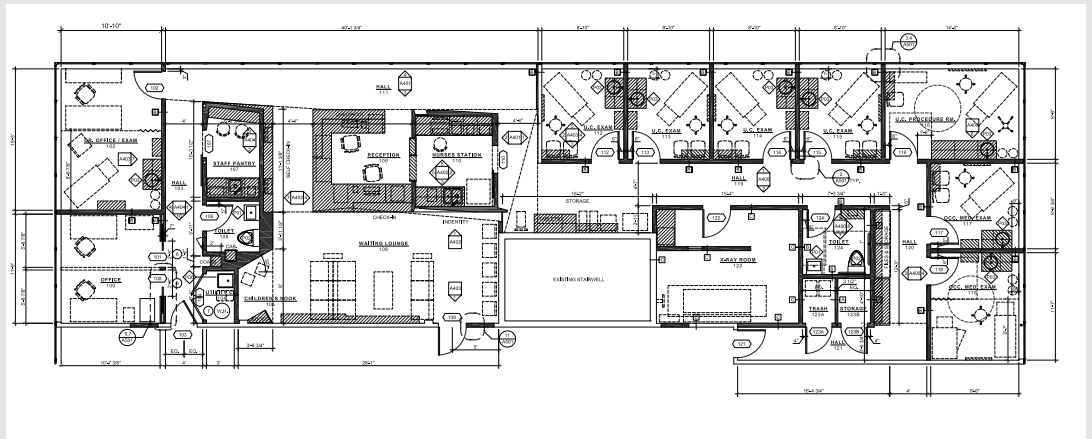
[dmetstudio.com](http://dmetstudio.com)

Completed 2013

# EMCURA IMMEDIATE CARE BLOOMFIELD OFFICE AND CLINIC

BLOOMFIELD, MICHIGAN

**D MET**  
architecture & design



**FLOOR PLAN**  
2,400 SQUARE FEET

.....  
Midtown Detroit  
15 E Kirby Suite 103  
Detroit MI 48202

P 313 401 5181

[dmetstudio.com](http://dmetstudio.com)  
.....



## FIRM PROFILE

**D MET** is an award-winning, design-intensive studio located in Midtown, Detroit. As a full-service architecture and design studio, **D MET** brings a fresh sensibility to architectural services and the beautification and revitalization of urban space. We specialize in an informed, collaborative design approach that combines artistic and academic interests with hands-on professional experience. Since our opening in Midtown in 2010, **D MET** has been the Architect and designer for a multitude of game-changing projects (of varying types and scales) for clients who are the leaders and entrepreneurs of Detroit's revitalization. With each project we seek to contest the adverse conditions of metropolitanism by creating thoughtful, community-centric spaces in resurging locations. The results are delightful public spaces and buildings that respond to fundamental human and pragmatic concerns, while resonating with the neighborhoods in which they exist.

## APPROACH

At **D MET**, the creative process begins with research and dialogue. We seek to define and understand a project's fundamental goals and objectives in a multitude of ways. Our discursive and non-linear design process enables **D MET** to explore various design strategies and identify creative solutions that respond to the circumstances of each project. A final design emerges only after careful consideration and attention is given to the aesthetic and financial objectives, a site's historical and cultural significance, and the quality of materials to be used. **D MET's** relationships with the area's best consultants, fabricators and builders, in addition to the studio's attention to detail and focus on professional project management, ensures the creation and implementation of projects of the highest quality.

## SERVICES

### CORE SERVICES:

- Architecture (*commercial, institutional, mixed-use, and residential*)
- Interior Design
- Urban Design and Community Redevelopment
- Historic Preservation and Adaptive-reuse
- Facade Improvements
- Feasibility Studies and Test-Fits
- Identity Design and Branding
- Event Design

### ADDITIONAL SERVICES:

Through our affiliation with the landscape architecture and planning firm Stromberg/Garrigan Associates out of Philadelphia, PA, D MET studio offers the following additional services:

- Landscape Design and Planning
- Community Design and Planning
- Brownfield Re-development Planning

.....  
Midtown Detroit  
15 E Kirby Suite 103  
Detroit MI 48202

P 313 401 5181

[dmetstudio.com](http://dmetstudio.com)  
.....



## INSIDE D MET

**D MET** studio is led Architect Joel Schmidt and Designer Liz Skrisson. After practicing together for six years in various capacities, the husband and wife duo opened **D MET**'s Midtown studio in 2010. The opening of **D MET** marked a commitment to Detroit as the economic, cultural, and ancestral center of the metropolitan region and in time has proven to be the right move. The creative work of **D MET** draws from its Detroit ties, and is an outward example of the couples desire to build-upon the rich legacy of Detroit designers for which the area has become known. In addition, the couple seeks with each project to add artistry and beauty to the metropolitan landscape while working at improving the practice of Architecture. Located on the ground floor of the historic Park Shelton, in Midtown, Detroit, **D MET** studio is at the center of Detroit's entrepreneurial activity and is a founding member of Detroit's new creative sector.



### JOEL T. SCHMIDT, RA PRINCIPAL

Joel is an architect and founding principal of **D MET**. Joel is involved in all aspects of design, and project management.

Joel possesses an impressive resume of over 20 years of professional work as a lead designer and licensed architect, including experience at several award-winning design firms. His background includes employment at McIntosh Poris Associates, Brian Healy Architects, Kyu Sung Woo Architect and Bruner/Cott Associates. Joel is a registered architect in the state of Michigan and resident of Midtown Detroit.

Joel holds a Master of Architecture from Harvard University and a Bachelor of Science in Architecture from the Taubman College of Architecture and Urban Planning at the University of Michigan. He is an adjunct lecturer at the Taubman College of Architecture and Urban Planning where he has taught since 2006. His teaching focuses on integrated design and principals of advanced building construction.



### ELIZABETH A. SKRISSON, LEED AP PRINCIPAL

Liz is an architectural designer and founding principal of **D MET**. Liz is involved in all aspects of design, and construction documentation. Liz enjoys envisioning space and crafting effect through drawing. (She is a good counterpoint to Joel.)

Liz possesses over 8 years of professional experience as a lead designer at award winning architecture firms prior to founding **D MET**. Liz's initial training in hand-drafting and a semester abroad studying architecture in Florence, Italy continues to influence her work today. Liz is currently on the Board of the Midtown Montessori, an Advisor to and member of Art Center Community Garden, and a member of the Sweet on Detroit Beekeeping Club.

Liz holds a Master of Architecture from the Taubman College of Architecture and Urban Planning at the University of Michigan and a Bachelor of Science in Architecture from Lawrence Technological Institute. She also holds a certificate in Real Estate Development from the University of Michigan. Liz is a LEED accredited professional in Building Design and Construction.

.....  
Midtown Detroit  
15 E Kirby Suite 103  
Detroit MI 48202

P 313 401 5181

dmestudio.com  
.....

## SELECT CLIENT LIST

### INSTITUTION/PUBLIC

KRESGE FOUNDATION  
MIDTOWN DETROIT INC  
WAYNE STATE SCHOOL OF MEDICINE  
DETROIT DEVELOPMENT FUND  
GRANDMONT ROSEDALE DEVELOPMENT CORPORATION  
DTE ENERGY

### COMMERCIAL

GREAT LAKES COFFEE ROASTING CO.  
WOODWARD GARDENS LLC  
MORT CRIM COMMUNICATIONS , INC.  
SOUTHWEST DETROIT BUSINESS ASSOCIATION  
REVIVAL DETROIT & CRERAN DEVELOPMENT  
SHINOLA DETROIT  
ADNAN CHARARA STUDIO  
CANINE TO FIVE  
CRISPELLI'S BAKERY & PIZZERIA (BOSCO'S PIZZA CO.)  
LA FERIA SPANISH TAPAS (DUENDE LLC)  
EMCURA MEDICAL GROUP  
US FUEL  
THE HUB OF DETROIT

## CLIENT TESTIMONIALS

*"They listened intently to our vision for this space, and brought original ideas and highly creative solutions to the challenges we faced."*

GREG MIRACLE, PRESIDENT  
GREAT LAKES COFFEE ROASTING CO.

*"Joel and Liz were professional, meticulous and always personable. They were both great at communicating with us and our contractors and coordinated all aspects of our construction to ensure our vision was followed."*

SUPAK SOOKKASIKON MD ABIHM MRO  
EMCURA MEDICAL GROUP

## AWARDS AND RECOGNITION

### **2014 DETROIT HOME DESIGN AWARDS - BEST COMMERCIAL OFFICE INTERIOR 1ST PLACE**

THE KRESGE FOUNDATION DETROIT OFFICE

### **2014 DETROIT HOME DESIGN AWARDS - BEST COMMERCIAL OFFICE INTERIOR 2ND PLACE**

MIDTOWN DETROIT INC. MIDTOWN CO-LAB

### **2014 DETROIT HOME DESIGN AWARDS - BEST COMMERCIAL RETAIL INTERIOR 2ND PLACE**

THE GREAT LAKES COFFEE ROASTING CO. INSTITUTE FOR ADVANCED DRINKING

### **2014 DETROIT HOME DESIGN AWARDS - BEST COMMERCIAL ARCHITECTURE 3RD PLACE**

CANINE TO FIVE DOGGY DAY CARE